

## Pipe slides type TF-1

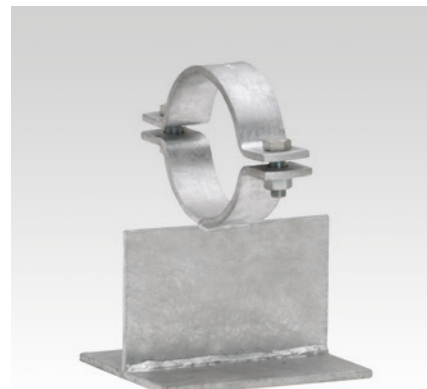
with one pipe clamp, DIN 3567

## Field of application

- Attachment of pipelines preferably with insulation in heavy-duty building technology, industrial construction and plant engineering
- Preferred for insulated pipes lines
- For insulation thicknesses up to 140 mm

## Advantages

- Special lengths are available upon request
- Also available with polyamide sliding plate upon request
- Also available in stainless steel as well as in primer coated version upon request



Nominal size DN	Pipe outer diameter D1 [mm]	Part no.		Sales unit	Pack unit
		W37-OR-SG	W37-OF-SF		
25	33.7	116403	116366	1	pieces
32	42.4	116406	116369		
40	48.3	116410	116372		
50	60.3	116413	116375		
65	76.1	116419	116380		
80	88.9	116422	116382		
100	114.3	116397	116357		
125	139.7	116400	116360		
150	168.3	116416	116363		

Pipe slide material	Pipe slide code	Pipe slide surface	Code for surface	Bolts and nuts	Code for bolts and nuts
S235JR (St37)	W37	untreated	OR	Strength class 8.8, galvanised	SG
		hot-dip galvanised	OF	Strength class 8.8, hot-dip galvanised	SF

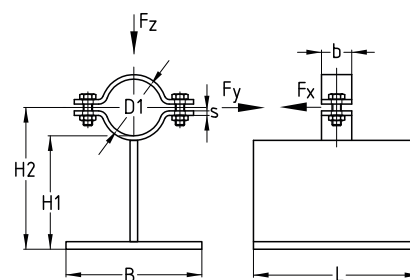
**Ordering example:** T-section slide guide made from S235JR (St37) with 1 pipe clamp, pipe slide hot-dip galvanised, with hot-dip galvanised bolts and nuts, strength class 8.8, for pipe outer diameter of 114.3 mm.

**Part no. 116357    Type: TF-1-W37-OF-SF-114.3**



Pipe guide with polyamide sliding surface as well as other versions available upon request.

### Pipe slides type TF-1 with one pipe clamp, DIN 3567



Nominal size DN	Pipe outer diameter D1 [mm]	Dimensions [mm]						Loading			Weight [kg/piece]
		s	b	L	B	H1	H2	F <sub>x</sub> [kN]	F <sub>y</sub> [kN]	F <sub>z</sub> [kN]	
25	33.7	5	30	220	180	150	167	0.5	0.5	1.0	5.300
32	42.4						171	0.7	0.7	1.4	5.400
40	48.3						174	1.0	1.0	2.0	5.400
50	60.3	6	40				180	1.6	1.6	3.2	5.700
65	76.1						188	1.8	1.8	3.6	5.800
80	88.9						195	2.0	2.0	4.0	5.900
100	114.3	8	50				207	2.6	2.6	5.2	6.900
125	139.7						220	3.0	3.0	6.0	7.100
150	168.3						234	3.2	3.2	6.4	7.300

