

Single bossed clamps

heavy-duty version, without lining, galvanised

Field of application

- Applicable as a pipeline anchor point
- Suitable for installations without vibration control requirements
- Attachment of sprinkler lines
- Suitable for fixings in shipbuilding and industrial areas
- For indoor use

Advantages

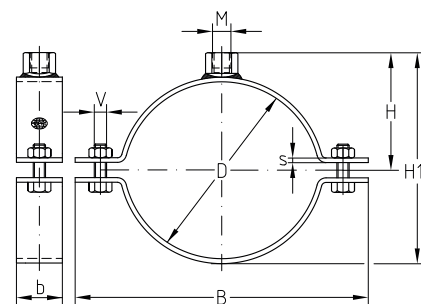
- Proven two-part clamp with increased material cross-section
- Stronger fastening latches for high load capacity
- High strength all-round welding of the connecting nut



Produktleistungen



Size	Max. recommended load [N]
3/8"-3"	5,000
102-125 mm	5,800
5"-6"	6,700
180-280 mm	11,000
315-429 mm	15,000
450-635 mm	17,000



Connecting thread	Size		Clamping range [mm]	Part no.	Sales unit	Pack unit	VdS	FM	Dimensions [mm]				
	[inch]	[mm]							b x s	B	H1	H	V
M8	¾		25–28	125697	100	pieces	●		30 x 3.0	74	45	28	M8
	1		31–35	125687			●			83	51	31	
	1¼		40–43	125691	50		●			92	60	35	
	1½		48–52	125689			●			100	69	40	
		57	53–57	125701			●			105	74	43	
	2			58–61			125695	●			110	78	
M10	¾		14–18	124771	100					66	35	24	M10
	½		20–22	124507					71	40	27		
	¾		25–28	124765	50		●		74	47	30		
	1		31–35	124495			●		83	53	33		
	1¼		40–43	124503			●		92	62	37		
	1½		48–52	124499			●		100	71	42		
		57	53–57	124861			●		105	76	45		
	2			58–61		124650		●		110	80	47	
		70	68–73	124906		●	●		121	92	52		
	2½			73–78		124653	●	●		126	97	55	
		83	80–85	124930	●	●		134	104	59			
	3			85–90	124762	●	●		144	109	61		
		102	98–104	124519	●	●		159	120	67			
	4			108–116	124814	●	●		170	132	73		

⚠ Single bossed clamps can be produced in all other pipe sizes and types according to customer specifications.

ℹ Please find additional information for the assembly of anchor and expansion points in chapter „Anchor points/expansion points“.