

Single bossed clamps

heavy-duty version, with DÄMMGULAST® red, galvanised

Field of application

- Suitable for pipelines with dynamic loads in combination with expansion points
- Suitable for fixings in shipbuilding and industrial areas
- Suitable for fastening of drinking water and heating pipes as well as for thermal oil pipes
- Attachment of pipelines in increased temperature ranges
- For indoor use

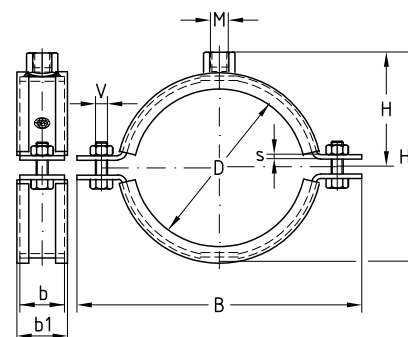
Advantages

- Proven two-part clamp with increased material cross-section
- Stronger fastening latches for high load capacity
- High strength all-round welding of the connecting nut
- DÄMMGULAST® Vibration control lining red, high-temperature resistant up to +225 °C
- Average sound level improvement up to 24 dB(A)
- Approved for the attachment of sprinkler systems by VdS



Features

Size	Max. recommended load [N]
3/8"-3"	5,000
102-133 mm	5,830
5" upwards	6,666



Connecting thread	Size		Clamping range [mm]	Part no.	Sales unit	Pack unit	Dimensions [mm]					
	[inch]	[mm]					b x s	B	b1	H1	H	V
M8	1/2		20-26	124422	100	pieces	30 x 3.0	83.0	34	52.0	32.0	M8
	3/4		25-28	124425				88.3		57.0	34.5	
	1		30-35	124430				91.5		61.0	36.5	
	1 1/4		40-43	124434				102.5		72.0	42.0	
	1 1/2		48-54	124438				109.9		79.0	45.5	
	2		57-64	124442				125.6		96.0	54.0	
M10		70	68-72	124302	50			133.6		105.0	59.5	M10
	2 1/2		72-80	124306				144.4		110.0	62.0	
		83	82-86	124311				155.0		119.1	66.6	
	3		88-92	124315				158.6		121.0	67.5	
		102	99-103	124283				170.4		133.2	73.6	
	4		108-118	124287				184.2		147.6	80.8	
M12		125	125-130	124331	25		40 x 4.0	202.5	46	164.0	90.0	
		133	133-141	124339				211.5		177.0	96.5	
	5		138-144	124343				217.0		178.0	97.0	
		160	159-168	124347				235.0		196.0	106.0	
	6		164-170	124359				242.0		205.0	110.5	



Single bossed clamps can be produced in all other pipe sizes and types according to customer specifications.

For use in areas with requirements on the duration of fire resistance, the boundary conditions set out in the fire test report must be observed.