

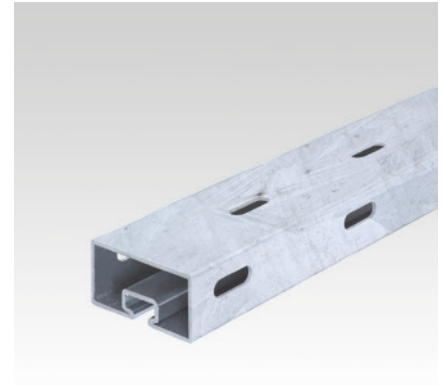
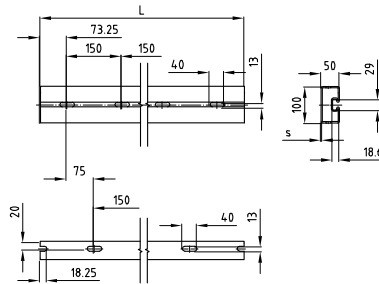
MPT-Support profile Q50 hot-dip galvanised

Field of application

- For support structures used in ship-building and on industrial and plant building sites

Advantages

- Saves time and costs during installation with the functional accessories matched to the support profile
- Assurance of uniform product quality due to imprinted manufacturing code
- Single-side continuous fastening groove for flexible arrangement of accessories and support parts
- Clean-cut appearance by the use of MPT-protection caps

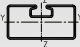


Profile	Profile length L [mm]	Profile thickness s [mm]	Part no.	Sales unit	Pack unit	Weight [kg/piece]
Q50-2.5	6,000	2.5	131624	1	pieces	41.700

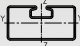
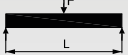
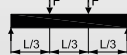


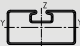

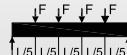
MPT-Support profile Q50 hot-dip galvanised


Technical data of profile:

Profile 	Material	Surface	Admissible steel stress $\sigma_{adm.}$ [N/mm ²]	Available hammer head bolts	Profile weight [kg/m]	Profile cross-section [cm ²]	Moment of inertia		Resistance moment	
							I_y [cm ⁴]	I_z [cm ⁴]	W_y [cm ³]	W_z [cm ³]
Q50-2.5	S235	hot-dip galvanised	158	M10 M12	6.95	8.40	32.30	94.10	12.10	18.80

Max. load capacities of profile [N]:

Profile 	Bending into direction	L [m] 						L [m] 					
		0.5	1.0	1.5	2.0	4.0	6.0	0.5	1.0	1.5	2.0	4.0	6.0
Q50-2.5	ZZ	13,664	7,392	4,983	3,731	847	197	9,147	5,353	3,675	2,338	497	115

Profile 	Bending into direction	L [m] 						L [m] 					
		0.5	1.0	1.5	2.0	4.0	6.0	0.5	1.0	1.5	2.0	4.0	6.0
Q50-2.5	ZZ	6,106	3,565	2,450	1,678	357	83	4,884	2,929	2,027	1,318	280	65

 The determined loads apply for static loads. Calculation based on Eurocode (EC3).
The safety coefficient $\gamma = 1.48$ takes into account the partial and combination coefficients as well as the safety factor of the material.
For the given values, the permissible steel stress and the maximum permissible deflection $L/200$ are not exceeded, taking the deadweight into consideration.