

### MPT-Support profile Q100 with 4 slots

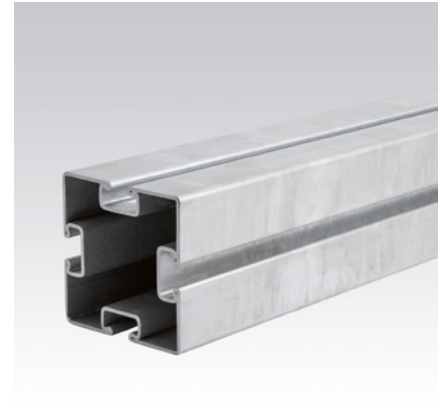
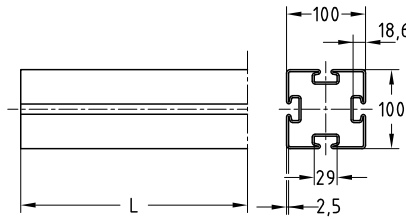
hot-dip galvanised

#### Field of application

- For support structures used in ship-building and on industrial and plant building sites
- Additional mounting slot increases connection possibilities, for example for 3D fixtures

#### Advantages

- For construction of safe structures due to the high load-bearing capacity of the profile
- Saves time and costs due to functional accessories that are matched to the support profile
- Continuous fastening groove for flexible arrangement of accessories and fastening components on all sides
- Clean-cut appearance by the use of MPT-protection caps



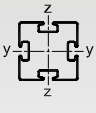
Profile	Profile length L [mm]	Profile thickness s [mm]	Part no.	Sales unit	Pack unit	Weight [kg/piece]
Q100-2.5 with 4 slots	6,000	2.5	166816	1	pieces	74.400



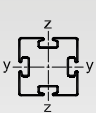
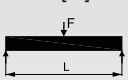
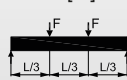
### MPT-Support profile Q100 with 4 slots

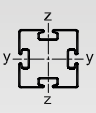
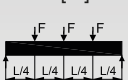
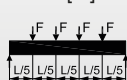
hot-dip galvanised


#### Technical data of profile:

 Profile	Material	Surface	Admissible steel stress $\sigma_{adm.}$ [N/mm <sup>2</sup> ]	Available hammer head bolts	Profile weight [kg/m]	Profile cross-section [cm <sup>2</sup> ]	Moment of inertia		Resistance moment	
							$I_y$ [cm <sup>4</sup> ]	$I_z$ [cm <sup>4</sup> ]	$W_y$ [cm <sup>3</sup> ]	$W_z$ [cm <sup>3</sup> ]
Q100-2.5 with 4 slots	S235	hot-dip galvanised	158	M10 M12	12.4	15.49	194.5	194.5	38.9	38.9

#### Max. load capacities of profile [N]:

 Profile	Bending into direction	 L [m]						 L [m]					
		0.5	1.0	1.5	2.0	4.0	6.0	0.5	1.0	1.5	2.0	4.0	6.0
Q100-2.5 with 4 slots	ZZ	38,257	22,759	15,753	11,941	5,823	2,267	25,799	15,753	11,343	8,739	3,418	1,331
	YY	38,257	22,759	15,753	11,941	5,823	2,267	25,799	15,753	11,343	8,739	3,418	1,331

 Profile	Bending into direction	 L [m]						 L [m]					
		0.5	1.0	1.5	2.0	4.0	6.0	0.5	1.0	1.5	2.0	4.0	6.0
Q100-2.5 with 4 slots	ZZ	17,213	10,494	7,562	5,828	2,452	954	13,436	8,482	6,200	4,809	1,925	750
	YY	17,213	10,494	7,562	5,828	2,452	954	13,436	8,482	6,200	4,809	1,925	750

-  The determined loads apply for static loads. Calculation based on Eurocode (EC3).  
 The safety coefficient  $\gamma = 1.48$  takes into account the partial and combination coefficients as well as the safety factor of the material.  
 For the given values, the permissible steel stress and the maximum permissible deflection  $L/200$  are not exceeded, taking the deadweight into consideration.