

### MPT-Support profile Q100 with 3 slots

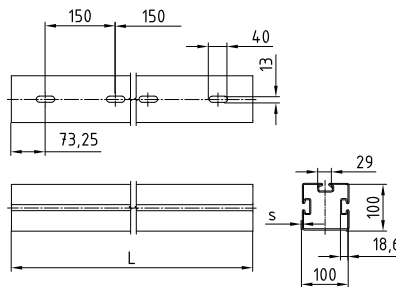
hot-dip galvanised

#### Field of application

- For support structures used in ship-building and on industrial and plant building sites
- Additional mounting slot increases connection possibilities, for example for 3D fixtures

#### Advantages

- For construction of safe structures due to the high load-bearing capacity of the profile
- Saves time and costs due to functional accessories that are matched to the support profile
- Clean-cut appearance by the use of MPT-protection caps



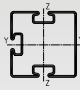
Profile	Profile length L [mm]	Profile thickness s [mm]	Part no.	Sales unit	Pack unit	Weight [kg/piece]
Q100-2.5 with 3 slots	6,000	2.5	142547	1	pieces	64.800



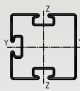
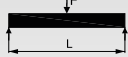
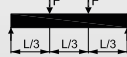
### MPT-Support profile Q100 with 3 slots

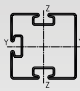
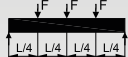
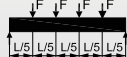
hot-dip galvanised


#### Technical data of profile:

Profile 	Material	Surface	Admissible steel stress	Available hammer head bolts	Profile weight [kg/m]	Profile cross-section [cm <sup>2</sup> ]	Moment of inertia		Resistance moment	
			$\sigma_{adm}$ [N/mm <sup>2</sup> ]				$I_y$ [cm <sup>4</sup> ]	$I_z$ [cm <sup>4</sup> ]	$W_y$ [cm <sup>3</sup> ]	$W_z$ [cm <sup>3</sup> ]
Q100-2.5 with 3 slots	S235	hot-dip galvanised	158	M10 M12	10.8	13.75	187.5	171.3	37.5	32

#### Max. load capacities of profile [N]:

Profile 	Bending into direction	L [m] 						L [m] 					
		0.5	1.0	1.5	2.0	4.0	6.0	0.5	1.0	1.5	2.0	4.0	6.0
Q100-2.5 with 3 slots	ZZ	37,411	22,059	15,232	11,540	5,642	2,228	25,411	15,338	10,996	8,459	3,313	1,308
	YY	33,732	19,221	13,184	9,991	5,047	2,398	23,637	13,605	9,610	7,367	3,167	1,407

Profile 	Bending into direction	L [m] 						L [m] 					
		0.5	1.0	1.5	2.0	4.0	6.0	0.5	1.0	1.5	2.0	4.0	6.0
Q100-2.5 with 3 slots	ZZ	16,955	10,218	7,331	5,641	2,376	938	13,262	8,271	6,017	4,658	1,866	737
	YY	15,774	9,063	6,407	4,913	2,272	1,009	12,437	7,382	5,278	4,067	1,784	793

-  The determined loads apply for static loads. Calculation based on Eurocode (EC3).  
 The safety coefficient  $\gamma = 1.48$  takes into account the partial and combination coefficients as well as the safety factor of the material.  
 For the given values, the permissible steel stress and the maximum permissible deflection  $L/200$  are not exceeded, taking the deadweight into consideration.