

Suspension clamps

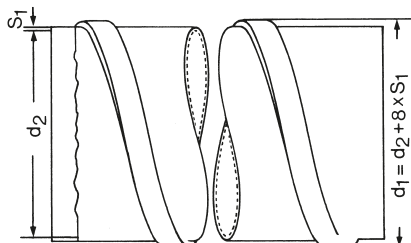
for spiral-seam pipes, one-piece, galvanised

Field of application

- Attachment of air ducts
- Preferably for suspended fixing

Advantages

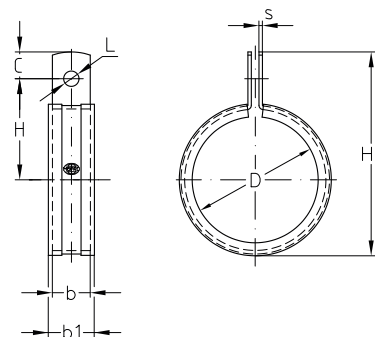
- Additional fixing using ligatures or HBS-holder or LL flat steel
- Available with and without vibration control lining



Features



Nominal size d_2 [mm]	Max. recommended load [N]
71–160	2,133
180–250	4,533
280–560	7,000
630–800	8,666
900–1,250	9,066



Without lining

Nominal size d_2 [mm]	Connection hole-Ø L [mm]	Part no.	Sales unit	Pack unit	Dimensions [mm]			
					b x s	C	H1	H
71	8.5	118455	1	pieces	20 x 1.0	14	105	53
80		118463					114	57
90		118471					124	62
125		118364					160	80
140		118372					175	81
150		118376					185	93
160		118384					195	98



Suspension clamps can be produced in all other pipe sizes and types according to customer specifications.