

### Angle- and T-connection plates galvanised

#### Field of application

- Strong connection elements for frames and pre-wall installations using the MPC- and MPR-System components

#### Advantages

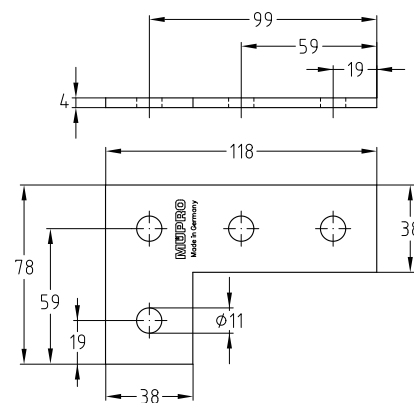
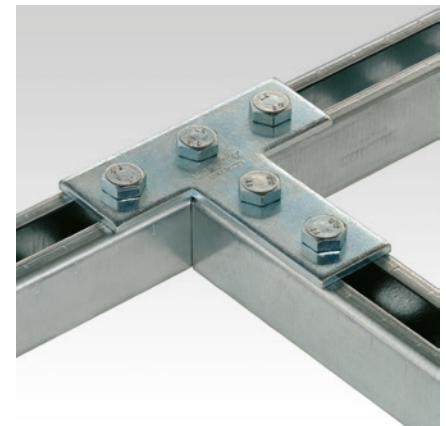
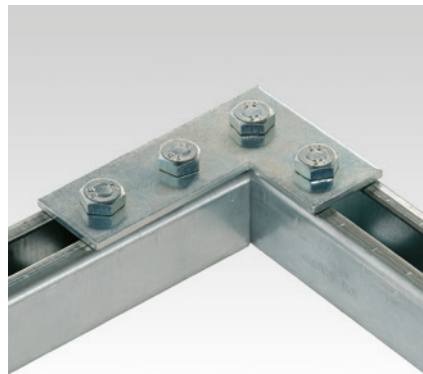
- Simple and quick connection of **angles and T-connections**
- The mounting plates allow frame construction in one plane, in which the channel slots have the same alignment
- Good adaptation to channel widths; the corners remain free in frame constructions
- Quick and simple attachment in combination with the MPC-Quick fastener for angle mounting
- Hole spacings allow pass-through mounting using the MPC- and MPR-Support channels



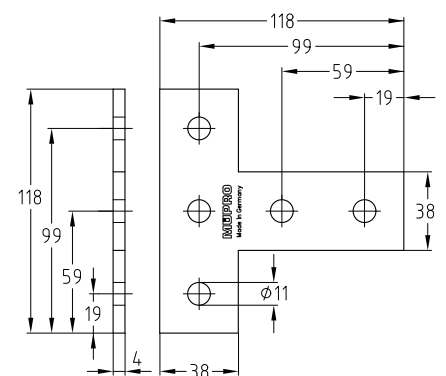
Angle plate



T-connection plate



Angle plate



T-connection plate

#### Features



	For support channels	Part no.	Sales unit	Pack unit
Angle plate	38/24–40/120,	127840	25	pieces
T-connection plate	41/21–41/124	130297		