

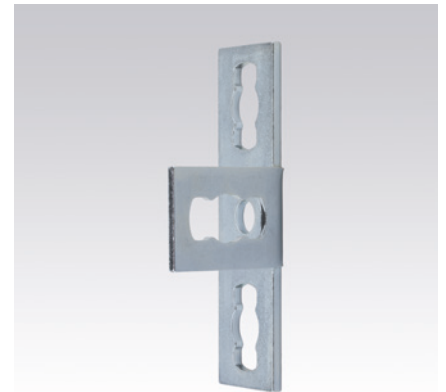
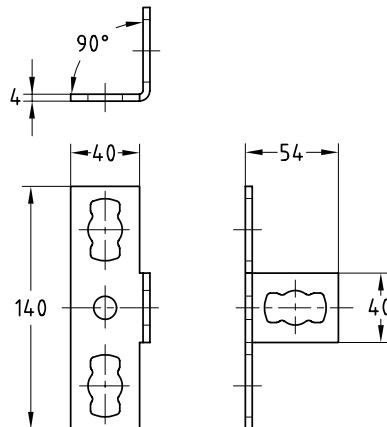
MPR-Channel support bracket type S+ galvanised

Field of application

- For right-angled connection of two channels where section slots do not have the same alignment
- Can be used as a connecting element in three-dimensional spatial structures preferably with the MPR-Support channel 41/41
- For indoor use

Advantages

- Fast and simple installation of joints in combination with the MPR-Connection lock type S+
- Flexible in connecting MPR-Support channels with, e.g. crossing support channels



Features



For support channels	Part no.	Sales unit	Pack unit
41/21–41/124	165826	25	pieces