

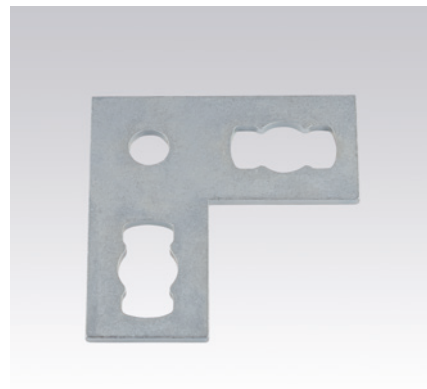
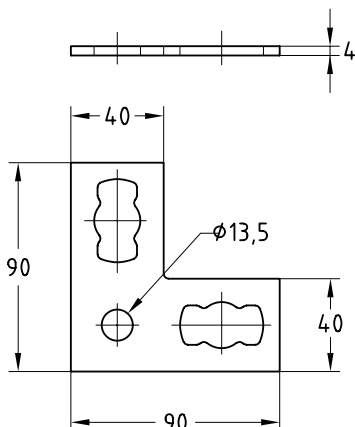
MPR-Connection plates type S+ galvanised

Field of application

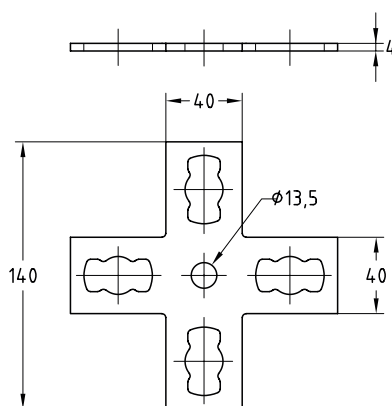
- Strong connection elements for frames and pre-wall installations using the MPR-System components
- For indoor use

Advantages

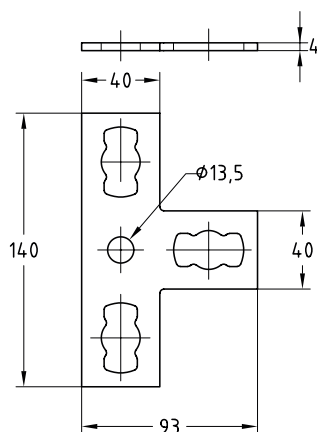
- Simple and quick connection of **angle connections, cross connections and T-connections**
- The mounting plates enable frame construction in one plane in which the channel slots have the same alignment
- Good adaptation to channel widths; the corners remain free in frame constructions
- Quick and simple attachment in combination with the MPR-Connection lock type S+



MPR-Angle plate 90° type S+



MPR-T-connection plate type S+



MPR-Cross connection plate type S+

Features

	For support channels	Part no.	Sales unit	Pack unit
Angle plate 90°	41/21-41/124	165829	25	pieces
T-connection plate		165827		
Cross connection plate		165828		

