

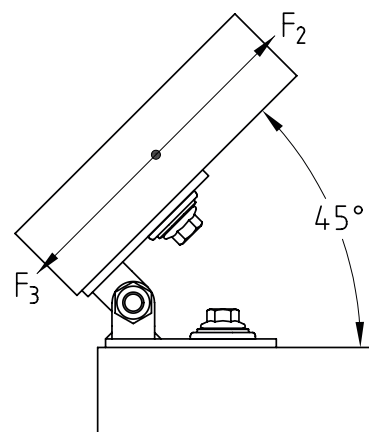
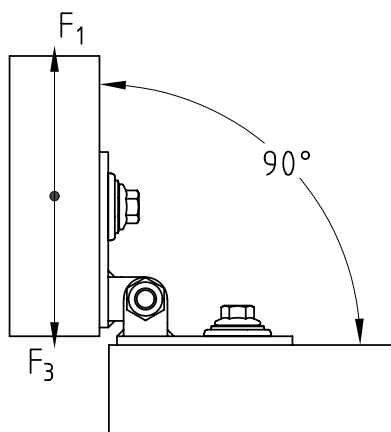
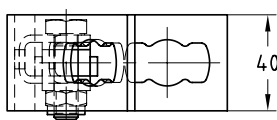
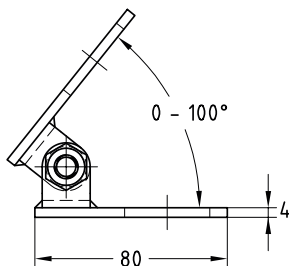
### MPR-VARIO joint type S+ galvanised

#### Field of application

- Flexible use for connection of MPR-Support channels, where different angle settings are required, such as for supports on brackets, etc.
- For indoor use

#### Advantages

- Pivot angle from 0° to 100° for fast and flexible adaptation to a wide variety of attachment situations – saves time and costs at the construction site
- Cost savings can be realised in the area of stockkeeping, as a variety of support solutions can be realized with only one item
- Stable design of the joint for optimal transmission of force
- Fast and simple installation using connection locks type S+



#### Features



Max. recommended load $F_1$ [N]	750
Max. recommended load $F_2$ [N]	500
Max. recommended load $F_3$ [N]	4,000
Tightening torque [Nm]	40

For support channels	Part no.	Sales unit	Pack unit
41/21–41/124	165819	10	pieces