

## MPR-Girder cleats

galvanised

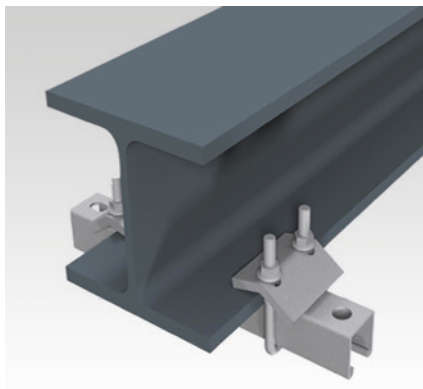


### Field of application

- Attachment of MPR-Support channels to steel girders without drilling or welding
- For use in dry interiors

### Advantages

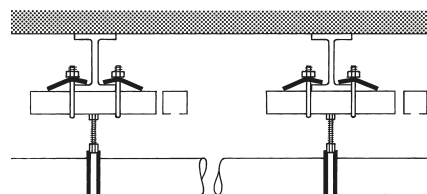
- Ideal solution for attachment of MPR-Support channels to steel girders
- Allows subsequent adjustment of the channels along and across the supporting beam
- Suitable for all flange thicknesses of common support profiles ( $\leq 24.5$  mm)
- Easy to install, pre-assembled kit
- Proper attachment of suspended loads on girders
- Girder cleats M8 or M10 VdS approved (please observe the profile size)



### Proof of usability

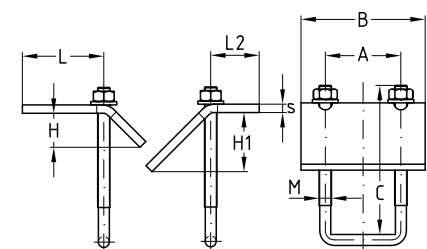


Girder cleat	Profiles	For threaded connection with hammer head fasteners, quick fasteners type S
M8	41/2.0	M8, M10, M12
M10	41/2.0, 41/2.5	(M8), M10, M12, M16



### Features

For support channels	Thread U-brackets	Max. permitted loading/pair [N] with hammer head fasteners			
		M8	M10	M12	M16
41/21/2.0	M8	4,500	4,500	4,500	4,500
41/41/2.0					
41/42/2.0					
41/41/2.5	M10	4,500	5,000	5,000	5,000
41/21/2.0			4,500	4,500	4,500
41/41/2.0			5,000	5,000	5,000
41/42/2.0					
41/41/2.5					
41/62/2.5					
41/82/2.0		4,500	4,500	4,500	4,500
41/124/2.5					



For support channels	Thread	Spanner width [SW]	Part no.	Sales unit	Pack unit	Dimensions [mm]							
						A	B	C	H	H1	L	L2	s
41/21, 41/41, 41/42	M8	13	151992	20	pieces	48	70	90	17.0	24.5	38.2	27.2	6
	M10	15	151095			50	80		18.5		39.7	30.7	8
41/62, 41/82			151096	15			130						
41/124			151993				170						