

MPR-Quick fasteners adapter

for pipe clamps acc. to DIN 3015, galvanised

Field of application

- MPR-Adapter for secure and easy installation of pipe clamps acc. to DIN 3015 light and heavy series on MPR-Substructures

Advantages

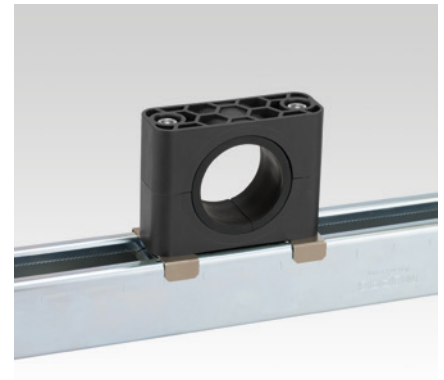
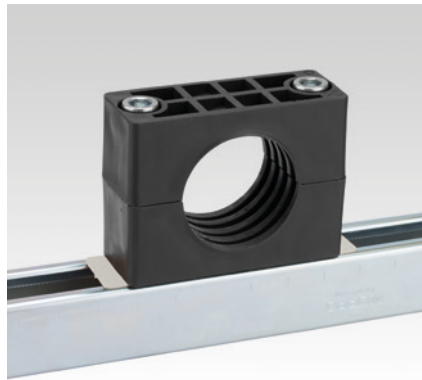
- Mounting of pipe clamps acc. to DIN 3015 light and heavy series on MPR-Support channels
- Reduction of additional support channels depending on the application
- Simple and secure handling: stable support for clamp bodies, quick fastening with only one hand
- Secure and easy installation: insert the adapter in the channel slot, rotate by 90°, position the pipe clamp and fasten screws



MPR-Quick fastener adapter for heavy series size



MPR-Quick fastener adapter for light series



Features



Design	For support channels	Suitable for	Size	Part no.	Sales unit	Pack unit
M6	41/21–41/124	light series	0–8	163007	100	pieces
M10		heavy series	1–3	163019	50	
M12			4	163003		