

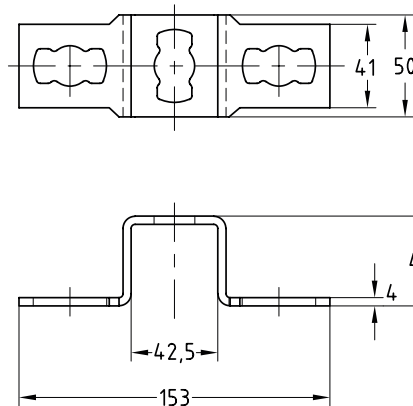
MPR-Cross channel connector type S+ galvanised

Field of application

- For cross connections in on-the-wall installations and shelves made of MPR-Support channels in combination with the MPR-Connection lock type S+
- For indoor use

Advantages

- Easy-to-install connection element for setting up structures with correctly designed static loads using MPR-Support channels
- More flexibility in creating rail constructions in combination with the MPR-Connection lock type S+



Features



| For support channels | Part no. | Sales unit | Pack unit |
|----------------------|----------|------------|-----------|
| 41/41, 41/42 | 165846 | 25 | pieces |