

MPR-Cross channel connectors

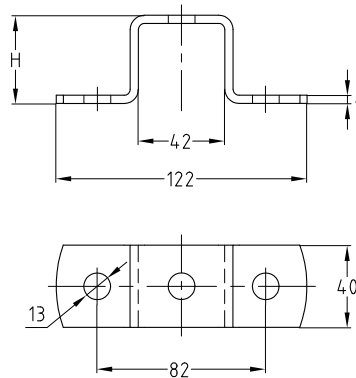
galvanised

Field of application

- For cross-connections in pre-wall mounted installations and shelves made from MPR-Support channels

Advantages

- Easy-to-install connection element for setting up structures with correctly designed static loads using MPR-Support channels
- Greater flexibility when setting up structures made from channels
- For rotation-resistant attachment to building structure



Features



For support channels	Part no.	Sales unit	Pack unit	Dimensions H [mm]
41/21	151093	25	pieces	23
41/41, 41/42	151994			43
41/62	151094			64
41/82	151995			84
41/124	151996			126