

MPR-Clamp brackets

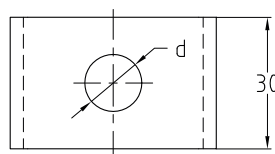
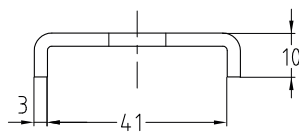
galvanised

Field of application

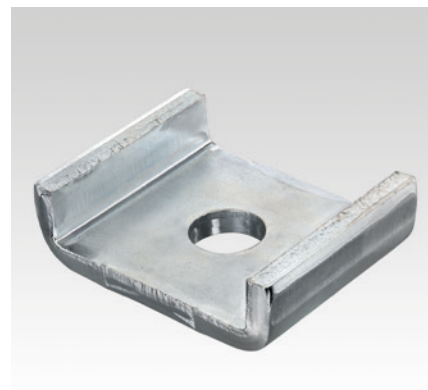
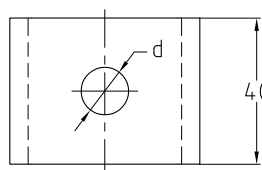
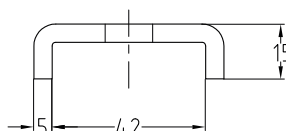
- For safe force transmission when installing MPR-Support channels together with threaded rods, anchor plugs and screws

Advantages



- Two versions available
- Heavy-duty type available for transferring large forces
- Safe, folded edge prevents expansion of the rail slot



Standard version



Heavy-duty version

Features						
Design	For support channels	For thread	Part no.	Sales unit	Pack unit	
Standard version	41/21–41/124	M8	165188	100	pieces	
		M10	151198			
		M12	151195			
Heavy-duty version		M8	151097	25		
		M10	151098			
		M12	114489			
		M16	151100			