

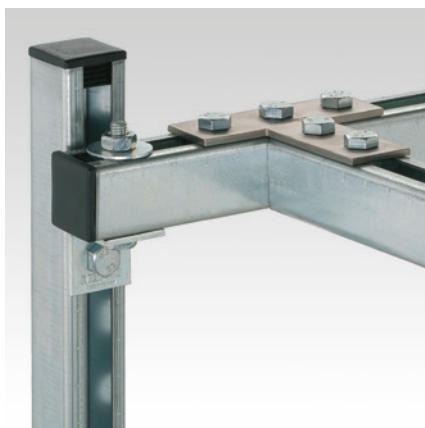
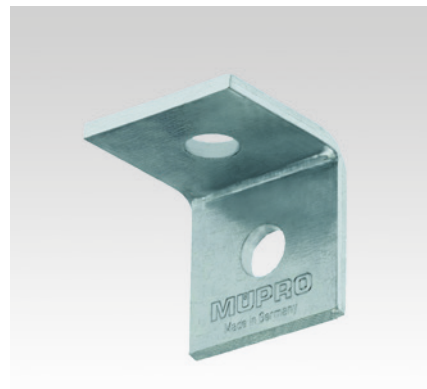
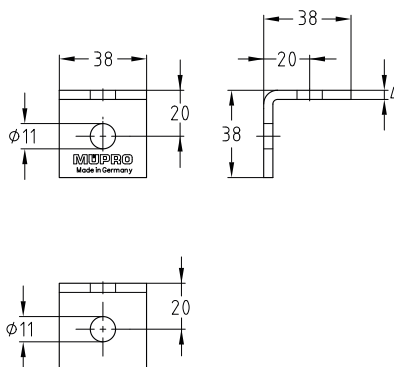
Mounting angle 90° short, galvanised

Field of application

- Strong and good value connecting element for the construction of frames, shelves and supports for pre-wall mounted installations

Advantages

- Creation of rigid structures without welding
- High flexibility and easy mounting
- Good adjustment to the widths of MPC- and MPR-Support channels



Features



For support channels	Part no.	Sales unit	Pack unit
38/24–40/120, 41/21–41/124	118820	25	pieces