

Mounting angles 90°

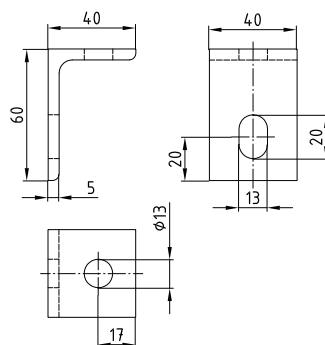
similar to DIN 1029, with oblong hole

Field of application

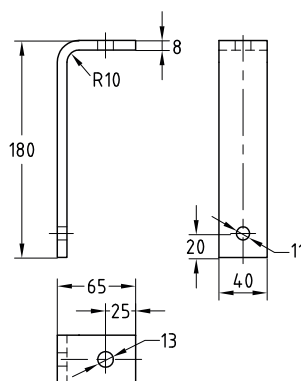
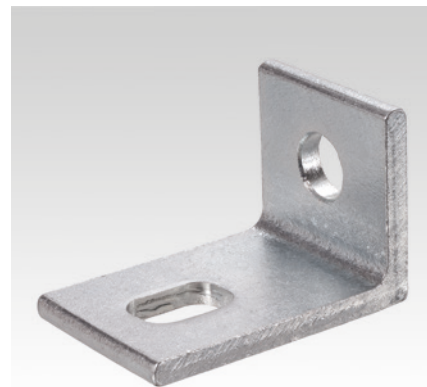
- Solid fixing element for construction of pre-wall installations, shelves as well as for channel constructions for mountings of pipelines and air ducts without welding
- Also applicable for direct mounting on bulkheads, ceilings or floors

Advantages

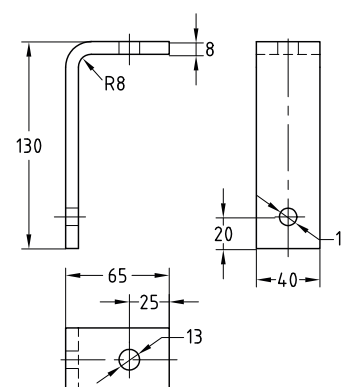
- Multi-use mounting angle
- Rational mounting via ribbed screws



Size 60 x 40 x 5 mm



Size 180 x 65 x 8 mm



Size 130 x 65 x 8 mm

Features



Size [mm]	Material	Part no.	Sales unit	Pack unit
60 x 40 x 5	Galvanised	143713	10	pieces
130 x 65 x 8	Hot-dip galvanised	147922		
180 x 65 x 8		148009		