

Construction brackets

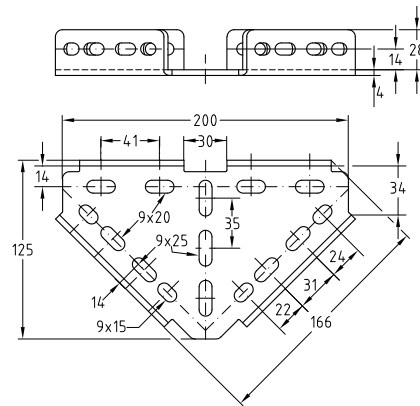
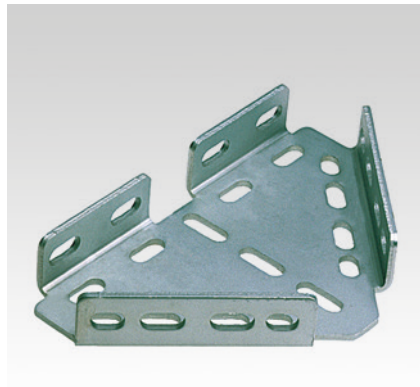
galvanised

Field of application

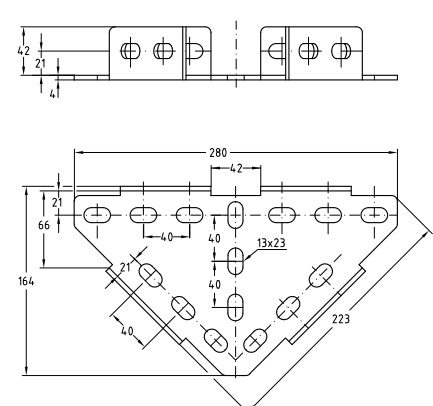
- Ideal connecting element for the construction of cross-beams, frames and shelving systems

Advantages

- Great variety of mounting possibilities when used with MPC- and MPR-Support channels
- Provides solid joint and angle connections
- Any arrangement of channel opening possible
- For direct mounting on ceilings, walls and floors or for installation with MPC- and MPR-Support channels as:
 - Angular support brackets
 - Angular load-bearing brackets
 - Floor supports
 - Junction brackets
 - Cross connections
 - Transverse support angles
 - Connection element



Type 1



Type 2

Features

| Type | For support channels | Suitable for | Size [mm] | Part no. | Sales unit | Pack unit |
|------|----------------------------|--------------|---------------|----------|------------|-----------|
| 1 | 27/18, 28/30 | MPC | 200 x 125 x 4 | 113598 | 1 | pieces |
| 2 | 38/24-40/120, 41/21-41/124 | MPC/MPR | 280 x 164 x 4 | 113601 | | |