

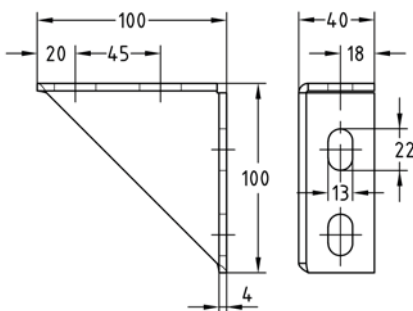
Cantilever brackets galvanised

Field of application

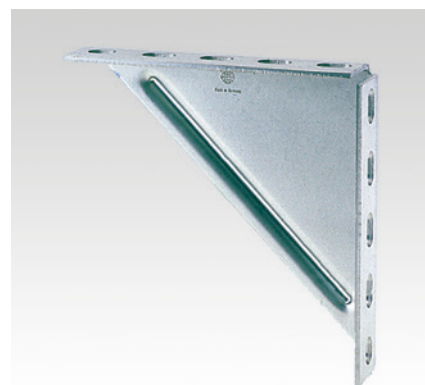
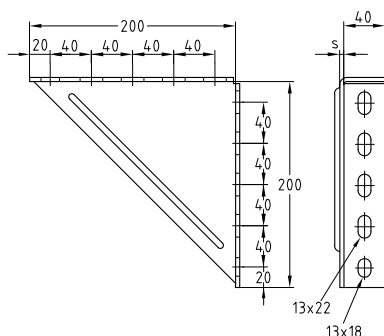
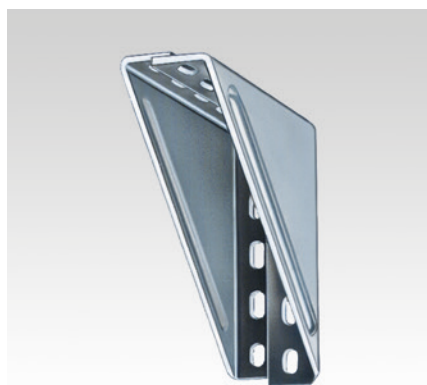
- Ideal connecting element for the construction of cross-beams and frames systems with support channels
- For use in dry interiors

Advantages

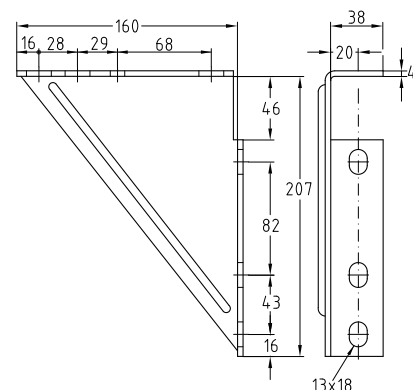
- Variety of mounting possibilities when used with MPC- and MPR-Support channels
- Reinforces and increases the load capacity of channel structures and cross-beams
- Even greater strength values can be achieved by bolting two equal-sided cantilever brackets together



Cantilever bracket 100 x 100



Cantilever bracket 200 x 200



Cantilever bracket 207 x 160

Features

| Design | Type | For support channels | Size [mm] | Part no. | Sales unit | Pack unit |
|-----------|------|----------------------|---------------|---------------|------------|-----------|
| 100 x 100 | — | 38/24–40/120, | 100 x 100 x 4 | 167126 | 20 | pieces |
| 200 x 200 | 1 | 41/21–41/124 | 200 x 200 x 4 | 113628 | 1 | |
| | 2 | | 200 x 200 x 6 | 113643 | | |
| 207 x 160 | — | | 207 x 160 x 4 | 113610 | | |



For further technical information please refer to chapter "Technical information".