

Angle- and T-connection plates

hot-dip galvanised

Field of application

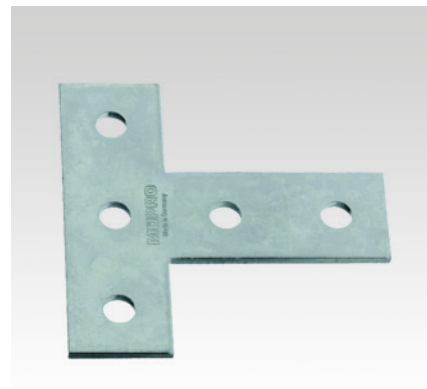
- Strong connection elements for frames and pre-wall installations using the MPC- and MPR-System components
- Suitable for outdoor use

Advantages

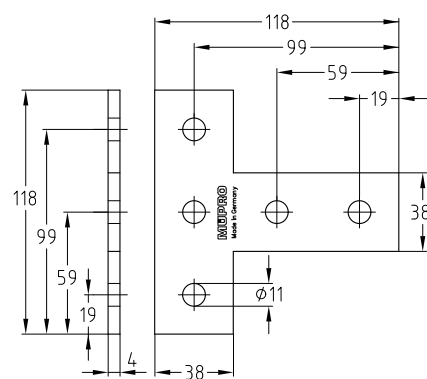
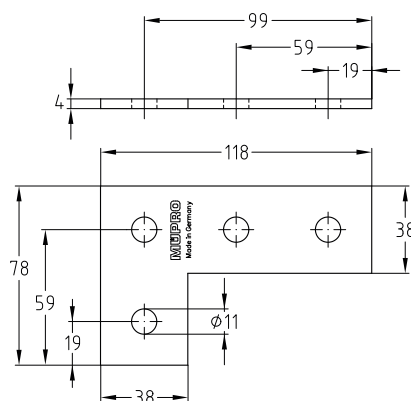
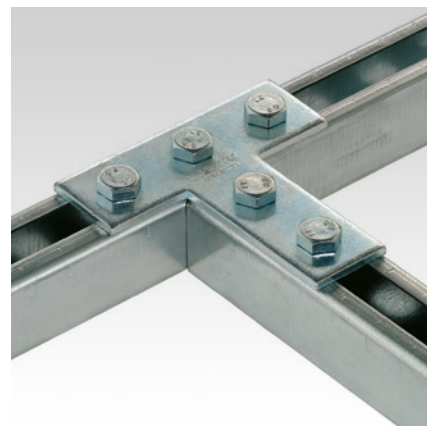
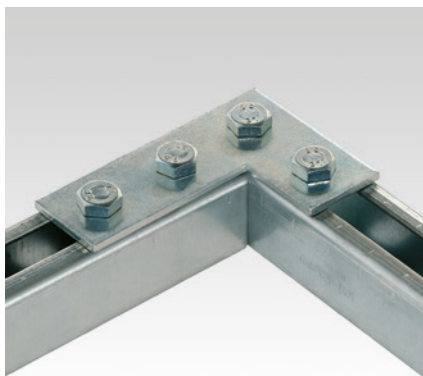
- Simple and quick connection of angles and T-connections
- The mounting plates allow frame construction in one plane, in which the channel slots have the same alignment
- Good adaptation to channel widths; the corners remain free in frame constructions
- Quick and simple attachment in combination with the MPC-Quick fastener for angled mounting
- Hole spacings allow pass-through mounting using the MPC- and MPR-Support channels



Angle plate



T-connection plate



Features



	For support channels	Part no.	Sales unit	Pack unit
Angle plate	38/40-40/120,	127849	25	pieces
T-connection plate	41/21-41/124	130299		