

### Channel connector

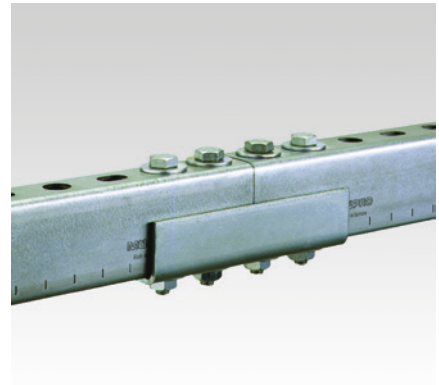
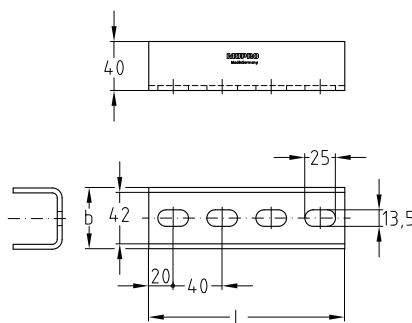
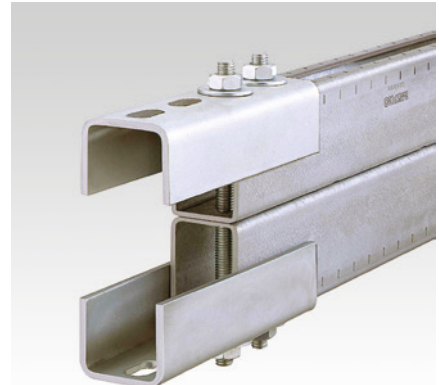
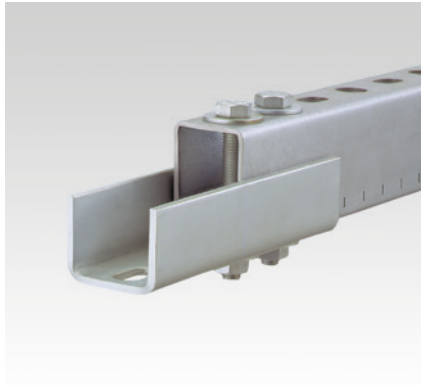
heavy-duty version, hot-dip galvanised

#### Field of application

- Quick butt-joint connection of MPC- and MPR-Support channels
- Suitable for outdoor use

#### Advantages

- Enables exact alignment of the channels
- Four bolts provide a frictional joint
- For highly load-bearing connections:
  - form-locking connection of through fitting attachments by means of threaded pins or hexagon head bolts and hexagonal nuts
  - with 4 oblong holes, adapted to the hole pattern of the MPC-Support channels
- Also available in double length for heavy-duty connections



#### Features



For support channels	Part no.	Sales unit	Pack unit	Dimensions [mm]	
				b	L
38/40–40/120, 41/21–41/124	120140	1	pieces	50	160

