

Mounting angles

hot-dip galvanised

Field of application

- Solid fixing element for construction of pre-wall installations and shelves as well as for channel constructions for attachments of pipelines and air ducts without welding
- Also applicable for direct mounting on walls, ceilings or floors
- Suitable for outdoor use

Advantages

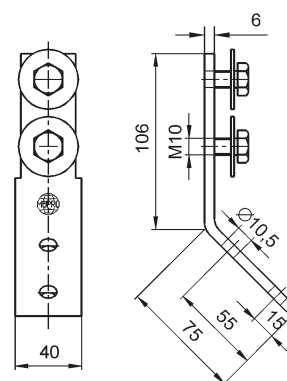
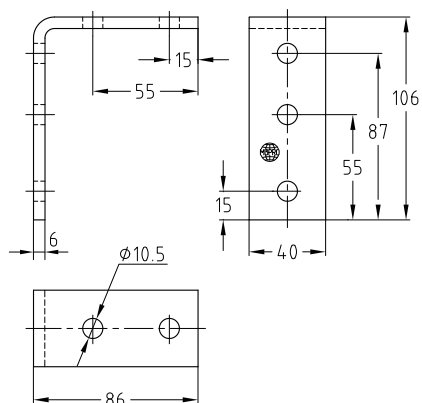
- Versatile in use due to oblong holes e.g. as:
 - Angular support bracket
 - Angular load-bearing bracket
 - Connection element
 - Angular bracket
- Multi-purpose component for professional, practical installation solutions



Mounting angle 90°



MPC-Mounting angle 45°



Features

Angle [°]	Accessories	For support channels	Suitable for	Part no.	Sales unit	Pack unit
45	2 Washers, 2 hexagon head bolts M10	38/40–40/120	MPC	118777	25	pieces
90	–	38/40–40/120, 41/21–41/124	MPC/MPR	118846		

