

MPR-Saddle support crosswise type S+

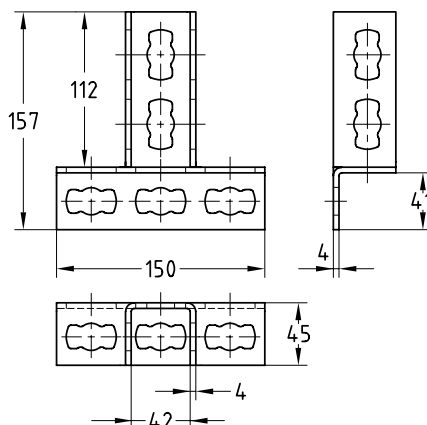
for channel support fitting, hot-dip galvanised

Field of application

- Simple assembly of strong cross-beams using MPR-Support channels
- Applicable for cramped installation conditions in shafts and ducts
- For indoor and outdoor use

Advantages

- Easily connected with the MPR-Support channels due to installation with the MPR-Connection lock type S+
- Good load transfer due to the high bending stiffness of the saddle connection
- Ideal connecting element for channel constructions especially of support channels 41/41



For support channels	Part no.	Sales unit	Pack unit
41/21–41/124	165871	1	pieces

