

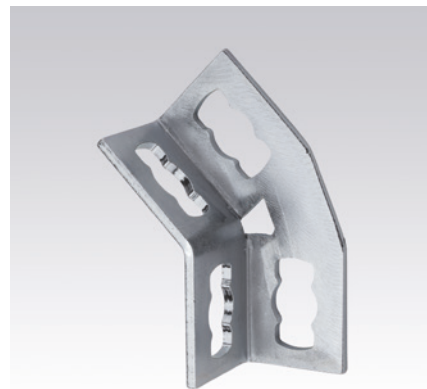
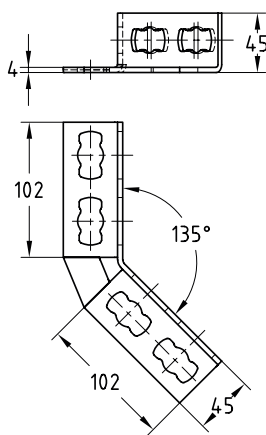
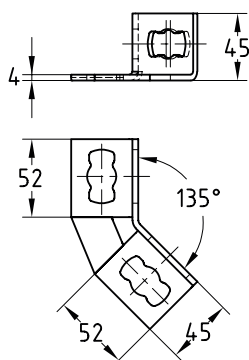
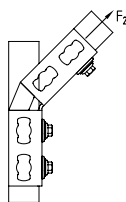
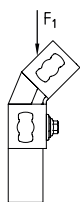
## MPR-Angle connectors 135° type S+ hot-dip galvanised

### Field of application

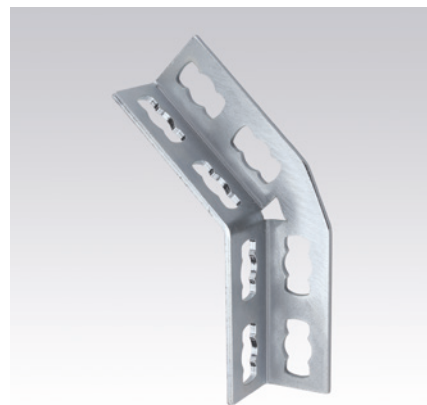
- Connecting element for on-the-wall installations, shelves and rail constructions, preferably by using the MPR-Support channel 41/41
- For indoor and outdoor use

### Advantages

- Fast and simple installation of angled joints with the MPR-Connection lock type S+
- Flexible use due to up to 4 connection locks depending on the design
- Increased load transfer when using 2 connection locks per leg
- Flexible connections in 2 directions with MPR-Support channels 41/41



MPR-Angle connector 135° 2+2  
type S+



MPR-Angle connector 135° 4+4  
type S+

### Features

Design	Admissible load F <sub>1</sub> [N]	Admissible load F <sub>2</sub> [N]
2+2	2,000	1,500
4+4	4,000	2,500

Design	For support channels	Part no.	Sales unit	Pack unit
2+2	41/21–41/124	165883	1	pieces
4+4		165884		

