

### Cantilever brackets

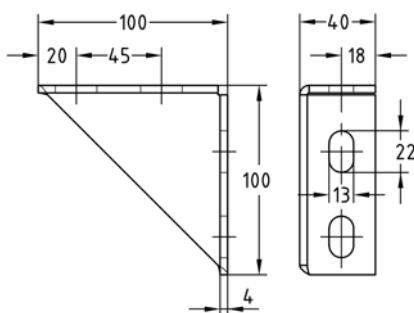
hot-dip galvanised

#### Field of application

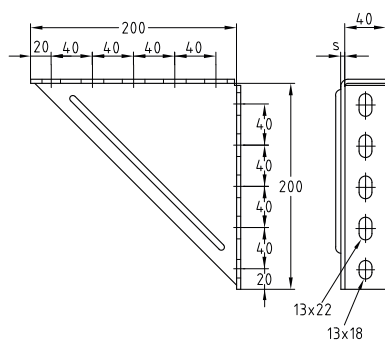
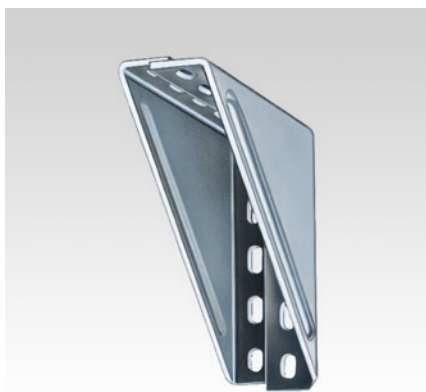
- For attachment to ceiling, wall and floor, free-standing or in a shaft
- Strong support bracket for water meters, distributing batteries, pumps and many other items

#### Advantages

- Variety of mounting possibilities when used with MPC- and MPR-Support channels
- Reinforces and increases the load capacity of channel structures and cross-beams
- Even greater strength values can be achieved by bolting two equal-sided cantilever brackets together



Cantilever bracket 100 x 100



Cantilever bracket 200 x 200

#### Features

Design	Type	For support channels	Size [mm]	Part no.	Sales unit	Pack unit
100 x 100	—	38/40–40/120,	100 x 100 x 4	<b>167127</b>	20	pieces
200 x 200	2	41/21–41/124	200 x 200 x 6	<b>113634</b>	1	



For further information please refer to chapter "Technical information".

