

Angle- and T-connection plates

Field of application

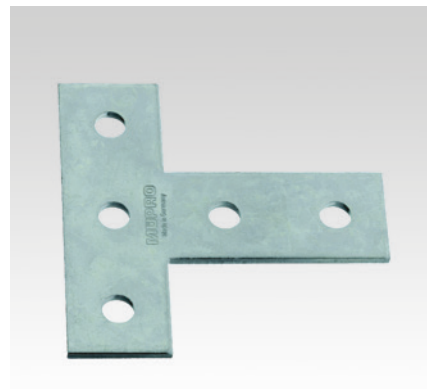
- Strong connection elements for frames and pre-wall installations using the MPC- and MPR-System components

Advantages

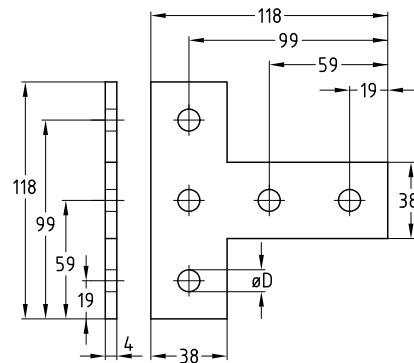
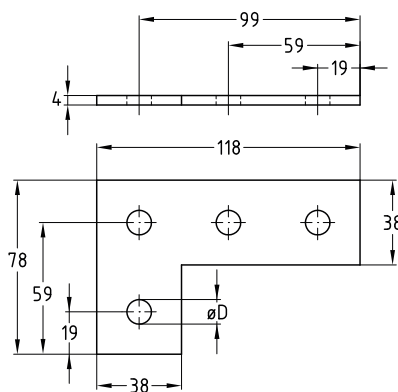
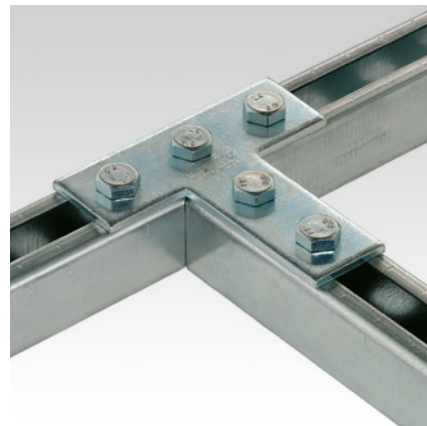
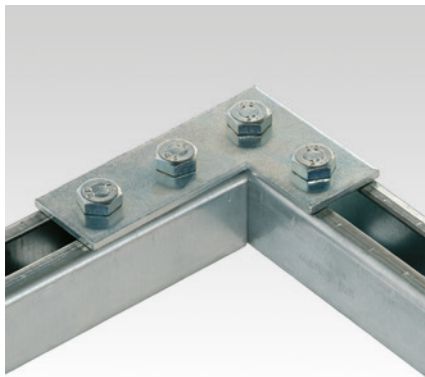
- Simple and quick connection of **corner- and T-connections**
- The mounting plates facilitate frame construction in one plane, in which the channel slots have the same alignment
- Hole spacings allow pass-through mounting using the MPC- and MPR-Support channels



Angle plate



T-connection plate

**Features**

	For support channels	Hole diameter D [mm]	Material	Part no.	Sales unit	Pack unit
Angle plate	38/40, 40/60, 41/21–41/124	11.0	V2A	127843	1	pieces
		13.5	V4A	159473		
T-connection plate		11.0	V2A	130298		
		13.5	V4A	159474		