

### Channel connector

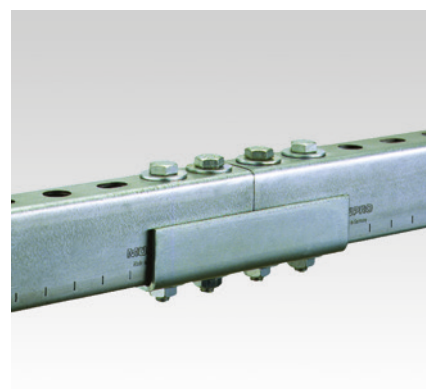
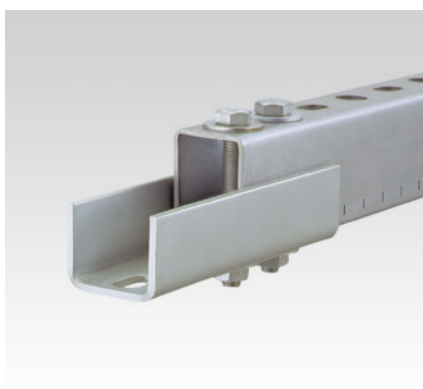
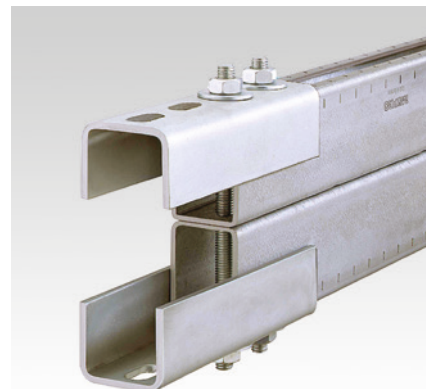
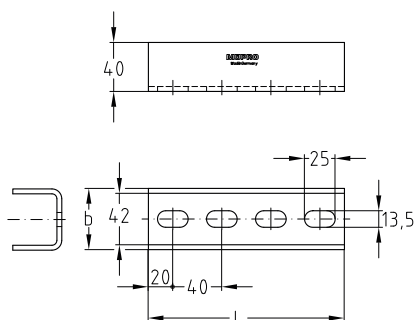
heavy-duty version

#### Field of application

- Quick butt-joint connection for MPC- and MPR-Support channels

#### Advantages

- Enables exact alignment of the channels
- Four bolts provide a frictional joint
- Form-locking connection between channel and connector (passthrough installation)



For support channels	Material	Part no.	Sales unit	Pack unit	Dimensions [mm]	
					b	L
38/40, 40/60, 41/21-41/124	V4A	159475	1	pieces	50	160

