

## MPR-VARIO-Saddle support

**Field of application**

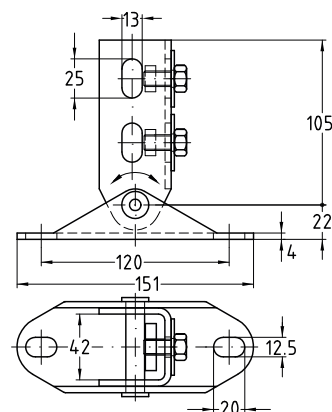
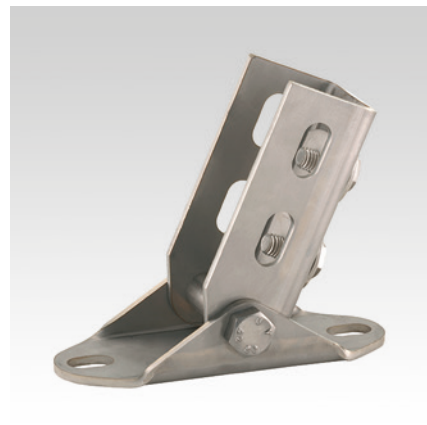
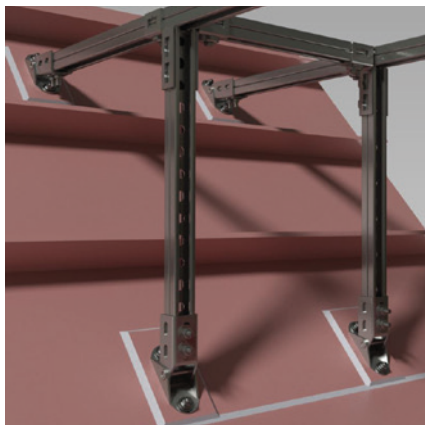
- Ideal for variable attachment of MPR-Support channels on slanting steel structures and bulkheads

**Advantages**

- Variable angle adjustment possible during installation
- Simple and quick installation due to pre-installed screws and MPR-Threaded plate
- Attachment to the slot of support channels 41/41 possible in all directions
- Positive-fit joining due to interlocking MPR-Support channels and MPR-Threaded plates

Completely pre-assembled:

- 1 MPR-VARIO-Saddle support
- 2 MPR-Threaded plates M10
- 2 Hexagonal head bolts M10
- 2 Washers



For support channels	Minimum angle [°]	Material	Part no.	Sales unit	Pack unit
41/21–41/62	20	V4A	160008	1	pieces

