

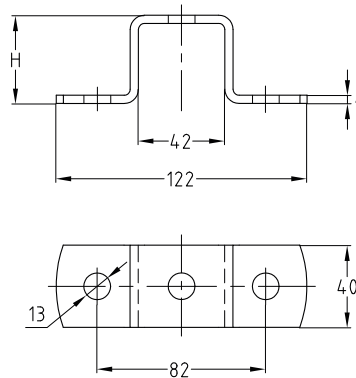
MPR-Cross channel connectors

Field of application

- For cross-connections e.g. in shelves made from MPR-Support channels
- For indoor and outdoor use

Advantages

- Easy-to-install connection element for setting up structures with correctly designed static loads using MPR-Support channels
- Greater flexibility when setting up structures made from channels
- For rotation-resistant attachment to building structure



Features



For support channels	Material	Part no.	Sales unit	Pack unit	Dimensions H [mm]
41/41	V4A	155634	10	pieces	43
41/62		155637			64

