

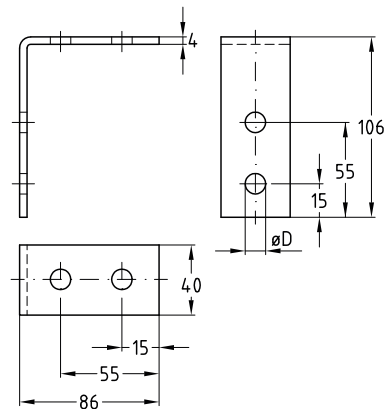
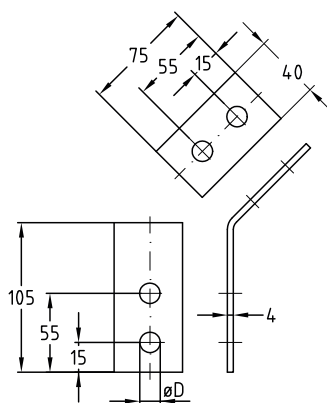
Mounting angles

Field of application

- Connection element for construction of wall-mounted installations, shelves as well as channel constructions for mountings of pipe-lines and air ducts without welding
- Applicable for direct mounting on walls, ceilings or floors
- For MPC- and MPR-Support channels

Advantages

- Versatile applicability due to oblong holes, e.g. as:
 - Angular support bracket
 - Angular load-bearing bracket
 - Connection element
 - Angular bracket
- Multi-purpose component for professional, practical installation solutions



Features

Design	For support channels	Hole diameter D [mm]	Part no.		Sales unit	Pack unit
			V2A	V4A		
45°	38/40, 40/60, 41/21–41/124	11.0	118757	118773	25	pieces
		13.5	–	159471		
90°		11.0	118824	118858		

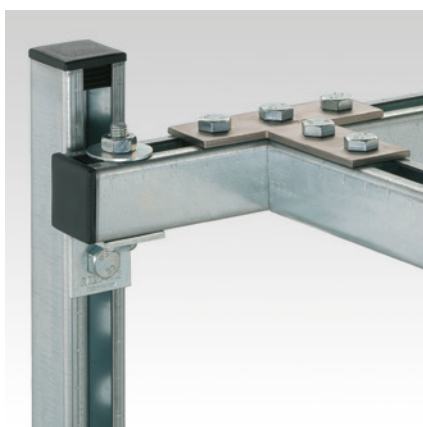
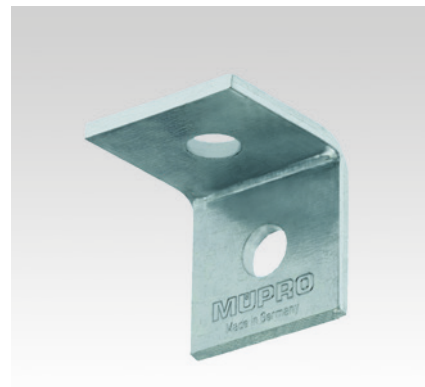
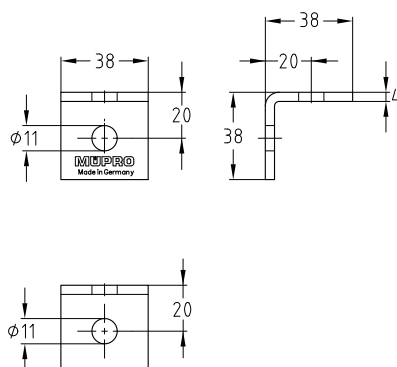
Mounting angle short

Field of application

- Strong and good value connecting element for the construction of frames, shelves and supports for pre-wall installations

Advantages

- Creation of rigid structures without welding
- High flexibility and easy mounting
- Good adjustment to the widths of MPC- and MPR-Support channels



Features



For support channels	Material	Part no.	Sales unit	Pack unit
38/40, 40/60, 41/21-41/124	V2A	118854	25	pieces

