

Construction bracket

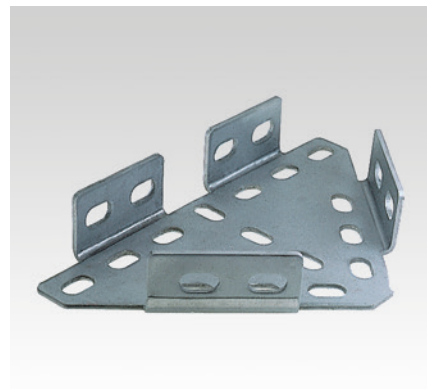
Field of application

- Ideal connecting element for the construction of cross-beams, frames and shelving systems
- For direct mounting on ceilings, walls and floors or for installation with MPC- and MPR-Support channels used as:
 - Angular support bracket
 - Angular load-bearing bracket
 - Basic prop
 - Angle bracket
 - Cross connection

- Transverse support angle
- Support angle
- Connection element
- Angular bracket

Advantages

- Great variety of mounting possibilities when used with MPC- and MPR-Support channels
- Results in rigid junction and angle connections
- For any direction of channel opening

**Features**

Size [mm]	For support channels	Material	Part no.	Sales unit	Pack unit
280 x 164 x 4	38/40, 40/60, 41/21-41/124	V2A	113595	1	pieces

