

## Duct fixing angles with insulator, galvanised

### Field of application

- Easy to install suspension for air ducts

### Advantages

- Incorporated highly-elastic vibration-isolating element
- Excellent alignment and height adjustment via the threaded rods
- Design as angle and twin-angle
- Various attachment options to air duct with rivets, self-drilling screws or bolts up to M8 in the oblong hole
- Direct attachment to building structure possible
- Average vibration reduction of 17 dB(A)



Duct fixing angles

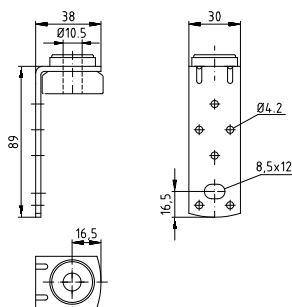
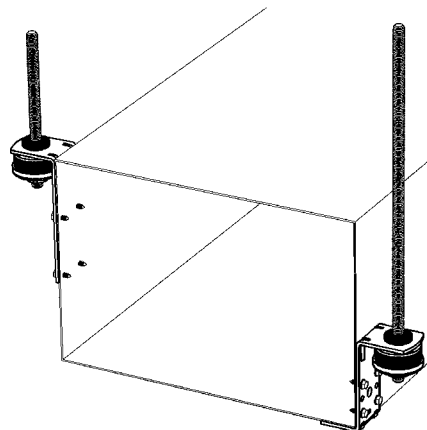


Duct fixing twin-angles

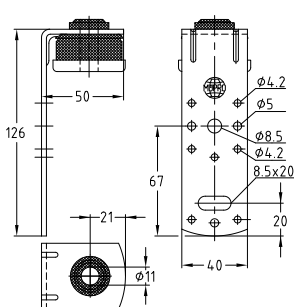
### Features



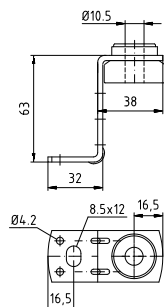
Type	Max. recommended load [N]	Average vibration reduction [dB(A)]
I	230	16
II	800	17



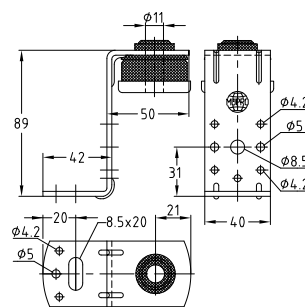
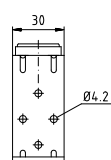
Duct fixing angles  
Type I



Duct fixing angles  
Type II



Duct fixing twin-angles  
Type I



Duct fixing twin-angles  
Type II

	Type	Part no.	Sales unit	Pack unit
<b>Duct fixing angles</b> with insulator, galvanised	I	<b>116579</b>	100	pieces
	II	<b>116635</b>	50	
<b>Duct fixing twin-angles</b> with insulator, galvanised	I	<b>116543</b>	100	
	II	<b>116546</b>	50	
<b>Rubber washers, single</b>	12 x 24 x 4 mm	<b>113092</b>	100	
	12 x 24 x 6 mm	<b>113094</b>		



Duct fixing angles and twin-angles are also available in other lengths.