

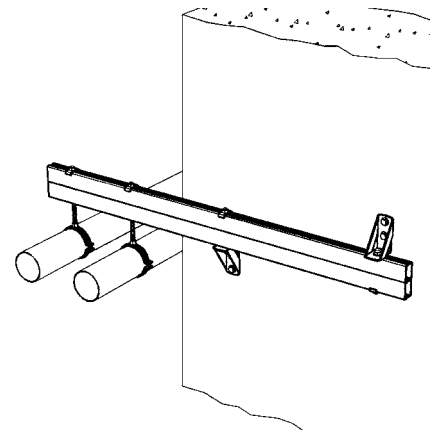
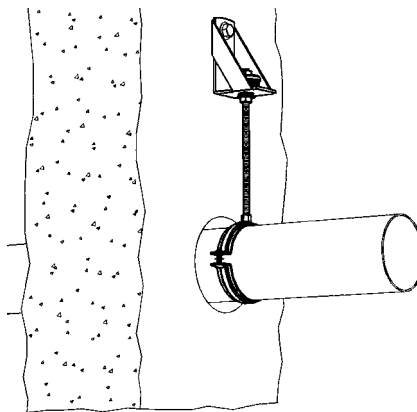
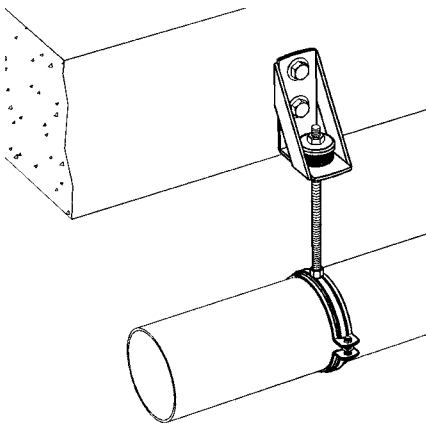
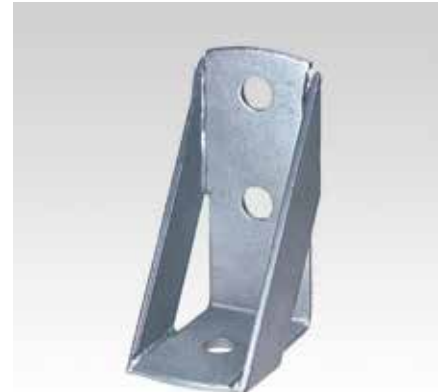
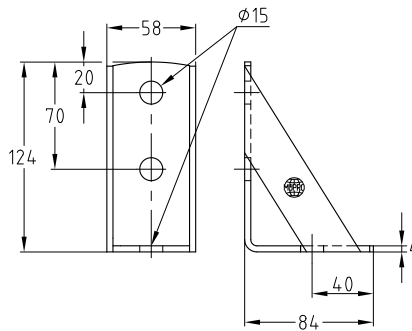
Supporting angle hot-dip galvanised

Field of application

- For lateral suspension of pipelines on reinforced concrete beams
- As substructure for the attachment of fittings, e.g. water meters

Advantages

- Angle element for higher requirements for stability of mounting structures
- As bracket for supporting heavy loads close to a wall
- For supporting cross-beams in confined spaces



Max. recommended load [N]	Part no.	Sales unit	Pack unit
5,000	127801	25	pieces

