

## MPR-Girder cleats

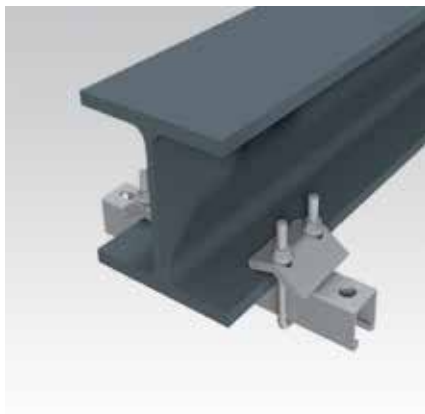
hot-dip galvanised

### Field of application

- Attachment of MPR-Support channels to steel girders without drilling or welding
- For indoor and outdoor use

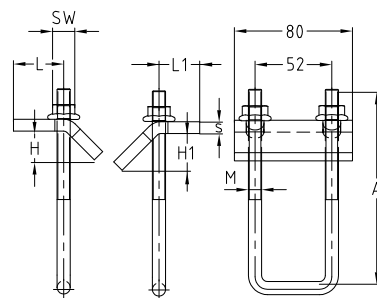
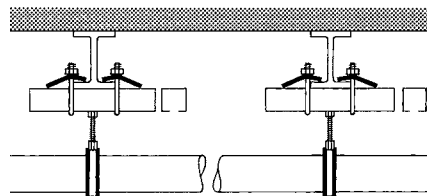
### Advantages

- Ideal solution for attachment of MPR-Support channels to steel girders
- Allows subsequent adjustment of the channels along and across the supporting beam
- Suitable for flange thicknesses of common support profiles
- Easy to install, pre-assembled kit
- Proper attachment of suspended loads on girders



### Features

For support channels	Thread U-brackets	Max. permitted loading/pair [N] with hammer head fasteners			
		M8	M10	M12	M16
41/21/2.0 41/41/2.0 41/42/2.0	M8	4,500	4,500	4,500	4,500
41/41/2.5			5,000	5,000	5,000
41/21/2.0 41/41/2.0 41/42/2.0	M10	4,500	4,500	4,500	4,500
41/41/2.5			5,000	5,000	5,000
41/62/2.5			4,500	4,500	4,500
41/82/2.0 41/124/2.5			5,000	5,000	5,000



For support channels	Thread	Spanner width [SW]	Max. clamping thickness [mm]	Part no.	Sales unit	Pack unit	Dimensions [mm]					
							A	H	H1	L	L1	s
41/21, 41/41, 41/42	M8	13	22	154232	10	pieces	90	18.5	24.5	34	30	6
	M10	15		154230								8
41/62, 41/82				154231			130					
41/124				154233			170					

