

## MPR-Mounting angles 90° type S+ QL

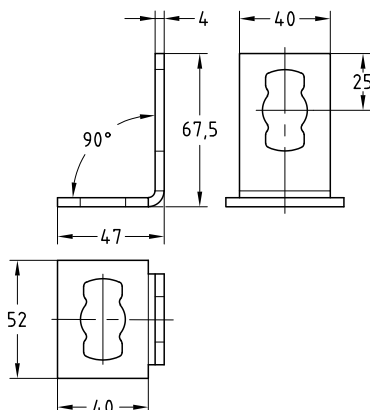
hot-dip galvanised

### Field of application

- Stable mounting angle for 90° connections in cramped mounting situations
- For indoor and outdoor use

### Advantages

- Fast and simple installation of 90° corner joints with the MPR-Connection lock type S+
- The mounting angle allows a stable connection of transverse and longitudinal support channels



| Design | For support channels | Part no. | Sales unit | Pack unit |
|--------|----------------------|----------|------------|-----------|
| 1+1 QL | 41/21–41/124         | 175785   | 25         | pieces    |

