

MPR-Clamp brackets

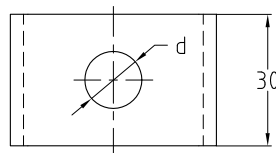
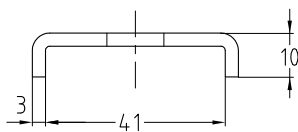
hot-dip galvanised

Field of application

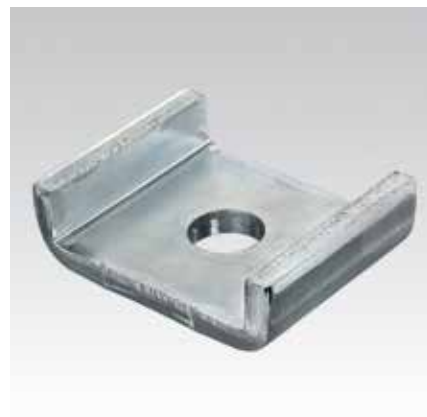
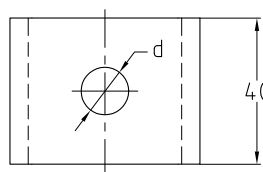
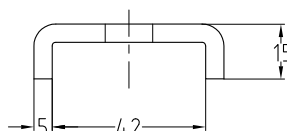
- For safe force transmission when installing MPR-Support channels together with threaded rods

Advantages

- Two versions available
- Heavy-duty type available for transferring large forces
- Safe, folded edge prevents expansion of the rail slot



Standard version



Heavy-duty version

Design	For support channels	For thread d	Part no.	Sales unit	Pack unit
Standard version	41/21–41/124	M10	154238	50	pieces
		M12	154237		
Heavy-duty version		M8	154234	10	
		M10	154235		
		M12	154803		
		M16	154236		

