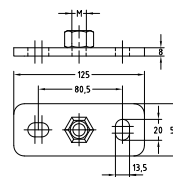


Base plates with hexagonal nut

welded around, galvanised

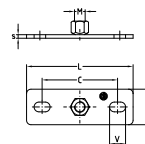
Size L x b x s [mm]	Connection socket	Oblong holes V [mm]	Hole- centre distance C [mm]	Part no.	Sales unit	Pack unit
125 x 50 x 8	M16	13 x 20	80.5	165187	10	pieces
	M20			164912		



Base plates with combi-nut with two oblong holes

galvanised

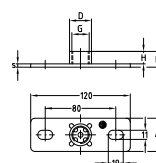
Size L x b x s [mm]	Connecting nut with dual-thread	Oblong holes V [mm]	Hole- centre distance C [mm]	Part no.	Sales unit	Pack unit
Size 1 (80 x 30 x 3)	M8/M10	9 x 16	54	112397	50	pieces



Base plates with connection socket with two oblong holes

galvanised

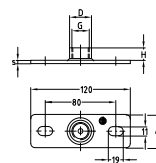
Size L x b x s [mm]	Connection socket G [inch]	Oblong holes V [mm]	Hole- centre distance C [mm]	Part no.	Sales unit	Pack unit	Dimensions [mm]	
							D	H
Size 1 (80 x 30 x 3)	1/2	9 x 16	54	112389	50	pieces	26.4	15
Size 2 (120 x 40 x 4)	3/4	11 x 19	80	112435			31.8	17
				112443				



Base plates with connection socket

welded around, galvanised

Size L x b x s [mm]	Connection socket G [inch]	Oblong holes V [mm]	Hole- centre distance C [mm]	Part no.	Sales unit	Pack unit	Dimensions [mm]	
							D	H
Size 2 (120 x 40 x 4)	1/2	11 x 19	80	112807	50	pieces	26.4	15
	3/4			112809			31.8	17
	1			112805			39.5	19



Base plates with connection socket

welded around, with four attachment holes, galvanised

Size L x b x s [mm]	Connection socket G [inch]	Part no.	Sales unit	Pack unit
Size 3 (100 x 60 x 4)	1/2	112825	50	pieces
	3/4	112829		
	1	112817		

