

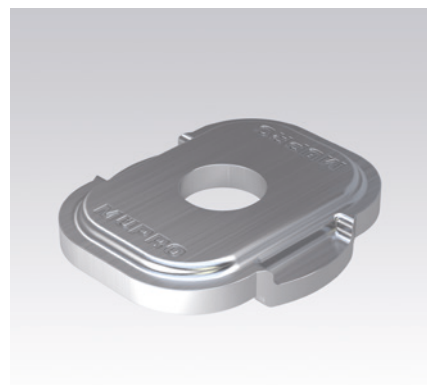
MPR-Adapter discs type S+ galvanised

Field of application

- Attachment of MPR-system components type S+ when making a through-fitting or direct attachment to the structure e.g. with anchor plugs

Advantages

- Three versions available
- Safe due to form lock in openings of MPR-system components type S+
- Galvanised version for use in dry interiors



Features

For thread	Part no.	Sales unit	Pack unit
M8	165511	50	pieces
M10	165512		
M12	165513		

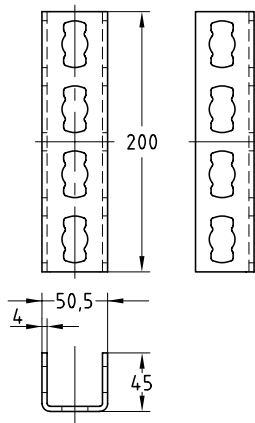
MPR-Channel connector type S+ heavy-duty version, galvanised

Field of application

- Fast butt-joining of MPR-Support channels and MPR-Connection lock type S+
- For indoor use

Advantages

- Enables exact alignment of the channels
- Frictional connection via 4 connection locks type S+
- Easy handling thanks to installation with connection lock type S+



Features

For support channels	Part no.	Sales unit	Pack unit
41/41-41/124	165844	1	pieces