

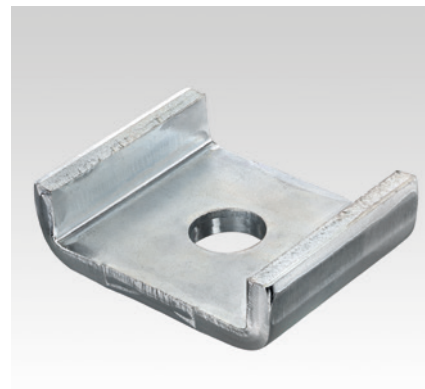
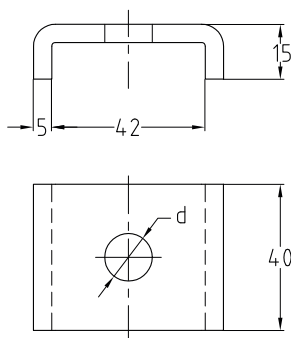
MPR-Clamp brackets

Field of application

- For safe force transmission when installing MPR-Support channels together with threaded rods, anchor plugs and screws

Advantages

- Heavy-duty type for transferring large forces
- Safe, folded edge prevents expansion of the rail slot



Features



Design	For support channels	For thread	Material	Part no.	Sales unit	Pack unit	Dimensions d [mm]
Heavy-duty version	41/21/2.0, 41/41/2.0, 41/62/2.5, 41/82/2.0, 41/124/2.5	M10	V4A	154450	10	pieces	11
		M12		155638			13

MPR-Protection caps

Field of application

- Plastic protection cap for mounting on open ends of the MPR-Support channels

Advantages

- Visually clean finish of the MPR-Support channels protects from injury
- Weather-resistant plastic material for long service life



For support channels	Part no.	Sales unit	Pack unit
41/21, 41/42	170506	100	pieces
41/41, 41/82	170508	50	
41/62, 41/124	151078	25	

Washers

for MPR-Support channels

For thread	Outer diameter [mm]	Thickness [mm]	Material	Part no.	Sales unit	Pack unit
M8	40	3	V4A	154454	100	pieces
M10				154455		
M12				154456		

