

## MPT-VARIO joints

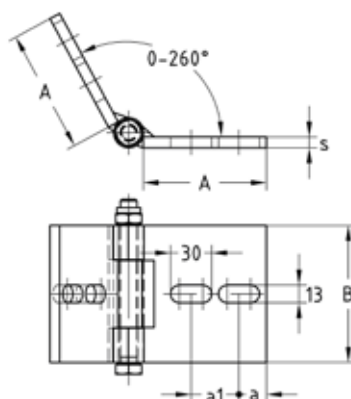
galvanised

### Application

- Reinforced joint angles for corner and angle connections as well as for bracing in combination with MPT-Support profiles Q50, Q80, Q100 and Q150
- Additional connection options due to fourfold perforation

### Your advantages

- Flexible connecting element for connecting MPT-Support profiles with any connection angles
- Any tolerances that may occur can be compensated due to oblong holes in mounting angles



### Features

Design		Max. recommended load [N]
		5,000
		7,500
		10,000

For profiles	Thickness s [mm]	Dimensions [mm]				Weight [kg]	Part no.	Sales unit	Pack unit
Q50-2.5, Q100-2.5, Q100-3.5, Q150-2.5	8	a	a1	A	B	1.39	166944	1	Pieces
Q80-2.0		22	38		80	1.095	167939		