

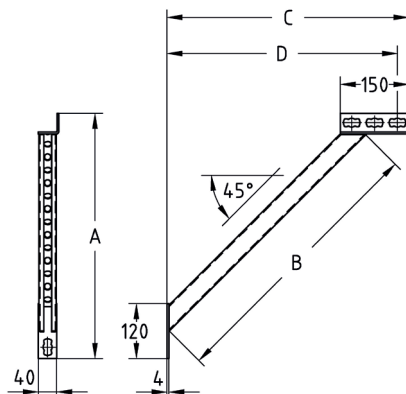
MPR-Diagonal struts type S+ galvanised

Application

- Supporting strut for reinforcement of corner joints in structures made of MPR-Support channels and MPR-Connection lock type S+
- For indoor use
- Also suitable for lateral support of consoles, e.g. for use with fixed points

Your advantages

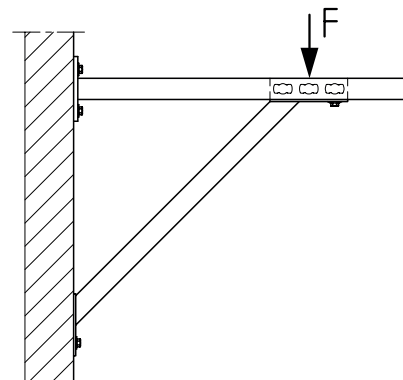
- Easily connected with the MPR-Support channels due to installation with the MPR-Connection lock type S+
- Various lengths available for different on-site installation conditions



Features



| Length [mm] | Max. recommended load mounting in support channel slot F [N] |
|----------------|---|
| 440 | 2,500 |
| 900 | 2,000 |



| For profiles | Length [mm] | Dimensions [mm] | | | | Part no. | Sales unit | Pack unit |
|--------------|----------------|-----------------|-----|-----|-----|----------|------------|-----------|
| | | A | B | C | D | | | |
| 41/41-41/124 | 440 | 420 | 440 | 405 | 380 | 165816 | 1 | Pieces |
| | 900 | 741 | 900 | 734 | 709 | 165818 | | |