

### Single bossed clamps

heavy-duty version, without lining, galvanised

#### Application

- Applicable as a pipeline anchor point
- Suitable for installations without vibration control requirements
- Attachment of sprinkler lines
- Suitable for fixings in shipbuilding and industrial areas
- For indoor use

#### Your advantages

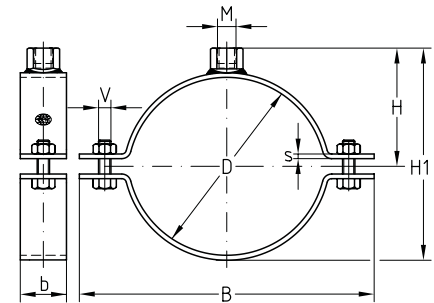
- Proven two-part clamp with increased material cross-section
- Stronger fastening latches for high load capacity
- High strength all-round welding of the connecting nut



#### Features



Size	Max. recommended load [N]
3/8" - 3"	5,000
102 - 125 mm	5,800
5" - 6"	6,700
180 - 280 mm	11,000
315 - 429 mm	15,000
450 - 635 mm	17,000



Connecting thread	Size		Clamping range [mm]	VdS	FM	Dimensions [mm]						Part no.	Sales unit	Pack unit
	[inch]	[mm]				b	s	B	H	H1	V			
M8	3/4"		25 - 28	x		30	3	74	28	45	M8	125697	100	Pieces
	1"		31 - 35	x	83			31	51	125687				
	1 1/4"		40 - 43	x	92			35	60	125691				
M10	3/8"		14 - 18	x		30	3	66	24	35	M10	175159	100	Pieces
	1/2"		20 - 22	x	71			27	40	175160				
	3/4"		25 - 28	x	x			74	30	47		175161		
	1"		31 - 35	x	x			83	33	53		175162		
	1 1/4"		40 - 43	x	x			92	37	62		175163		
	1 1/2"		48 - 52	x	x			100	42	71		175164		
			53 - 57	x	x			105	45	76		175165		
	2"		58 - 61	x	x			110	47	80		175166		
		70	68 - 73	x	x			121	52	92		124906		
	2 1/2"		73 - 78	x	x			126	55	97		124653		
		83	80 - 85	x	x			134	59	104		124930		
	3"		85 - 90	x	x			144	61	109		124762		
	102	98 - 104	x	x	159	67	120	124519						
4"		108 - 116	x	x	170	73	132	124814						



Single bossed clamps can be produced in all other pipe sizes and types according to customer specifications.

For use in areas with requirements on the duration of fire resistance, the boundary conditions set out in the fire test report must be observed.

### Single bossed clamps heavy-duty version, without lining, galvanised


Connecting thread	Size		Clamping range [mm]	VdS	FM	Dimensions [mm]						Part no.	Sales unit	Pack unit			
	[inch]	[mm]				b	s	B	H	H1	V						
M12	M12	3/8"	14 - 18	x		30	3	66	26	37	M8	175167	100	Pieces			
		1/2"	20 - 22	x				71	29	42		175168					
		3/4"	25 - 28	x	x			74	32	49		175169					
		1"	31 - 35	x				83	35	55		175170					
		1 1/4"	40 - 43	x	x			92	39	64		175171					
		1 1/2"	48 - 52	x	x			100	44	73		175172					
			53 - 57	x	x			105	47	78		175173					
		2"	58 - 61	x	x			110	49	82		175174					
			68 - 73	x	x			121	54	94		175175					
		2 1/2"	73 - 78	x	x			126	57	99		175176					
			80 - 85	x	x			134	61	106		175177					
		3"	85 - 90	x	x			144	63	111		M10			175178		
			98 - 104	x	x			159	69	122		175179					
		4"	108 - 116	x	x			170	75	134		175180					
			125	124 - 130	x			x	184	82		149			125038		
		5"	133 - 140	x	x			40	4	203		89			163	125356	25
		6"	160 - 169	x	x					231		103			191	125374	
		M12/M16/1/2" ET		180	176 - 181			x		50		5			271	119	213
	198		193 - 200	x		289	128	231	175182								
	212		208 - 214	x		303	135	245	175183								
	223		219 - 225	x		314	141	256	175184								
	248		244 - 250			339	153	281	166458								
	272		267 - 274			363	165	305	166459								
	280		276 - 282			371	169	313	166460								
	315		311 - 316			409	188	350	166461								
	326		322 - 327			420	193	361	166462								
	355		351 - 356			449	208	390	166463								
	405		400 - 407			499	233	440	166464								
	429		425 - 430			523	245	464	166465								
	500		495 - 501			60	6	597	281		537		166468				
	508		503 - 509					605	285		545		166469				
	610		605 - 611					702	336		647		166472				
	635	630 - 636					732	349	672	166473							
M20		248	244 - 250	x		40	4	339	153	281		173531					
		272	267 - 274	x				363	165	305	173532						
		280	276 - 282	x				371	169	313	173533						
		315	311 - 316	x		50	5	409	188	350		173534					
		326	322 - 327	x				420	193	361	173535						



Single bossed clamps can be produced in all other pipe sizes and types according to customer specifications.  
For use in areas with requirements on the duration of fire resistance, the boundary conditions set out in the fire test report must be observed.

### Single bossed clamps heavy-duty version, without lining, galvanised

Connecting thread	Size		Clamping range [mm]	VdS	FM	Dimensions [mm]						Part no.	Sales unit	Pack unit
	[inch]	[mm]				b	s	B	H	H1	V			
M12/M16/1/2" IT		180	176 - 181			40	4	271	138	232	M16	167407	1	Pieces
		198	193 - 200					289	147	250		167408		
		212	208 - 214					303	154	264		167409		
		223	219 - 225					314	160	275		167410		
		248	244 - 250					339	172	300		167411		
		272	267 - 274					363	184	324		167412		
		280	276 - 282					371	188	332		167413		
		315	311 - 316			50	5	409	207	369		167414		
		326	322 - 327					420	212	380		167415		
		355	351 - 356					449	227	409		167416		
		405	400 - 407					499	252	459		167417		
		429	425 - 430					523	264	483		167418		
		450	446 - 451			60	6	547	275	506		167419		
		457	453 - 458					554	279	513		167420		
		500	495 - 501					597	300	556		167421		
		508	503 - 509					605	304	564		167422		
		532	527 - 533					629	316	588		167423		
		560	555 - 561					657	330	616		167424		
		610	605 - 611					702	355	666		167425		
		635	630 - 636			732	368	691	167426					
M12/M16/1" IT		180	176 - 181			40	4	271	156	250	167447			
		198	193 - 200					289	165	268	167448			
		212	208 - 214					303	172	282	167449			
		223	219 - 225					314	178	293	167450			
		248	244 - 250					339	190	318	167451			
		272	267 - 274					363	202	342	167452			
		280	276 - 282					371	206	350	167453			
		315	311 - 316			50	5	409	225	387	167454			
		326	322 - 327					420	230	398	167455			
		355	351 - 356					449	245	427	167456			
		405	400 - 407					499	270	477	167457			
		429	425 - 430					523	282	501	167458			
		450	446 - 451			60	6	547	293	524	167459			
		457	453 - 458					554	297	531	167460			
		500	495 - 501					597	318	574	167461			
		508	503 - 509					605	322	582	167462			
		532	527 - 533					629	334	606	167463			
		560	555 - 561					657	348	634	167464			
		610	605 - 611					702	373	684	167465			
		635	630 - 636			732	386	709	167466					

 Single bossed clamps can be produced in all other pipe sizes and types according to customer specifications. For use in areas with requirements on the duration of fire resistance, the boundary conditions set out in the fire test report must be observed.